

Appendix II(s)

Figure 9. Revised distribution map of the woolly lemurs (genus *Avahi*) of Madagascar.

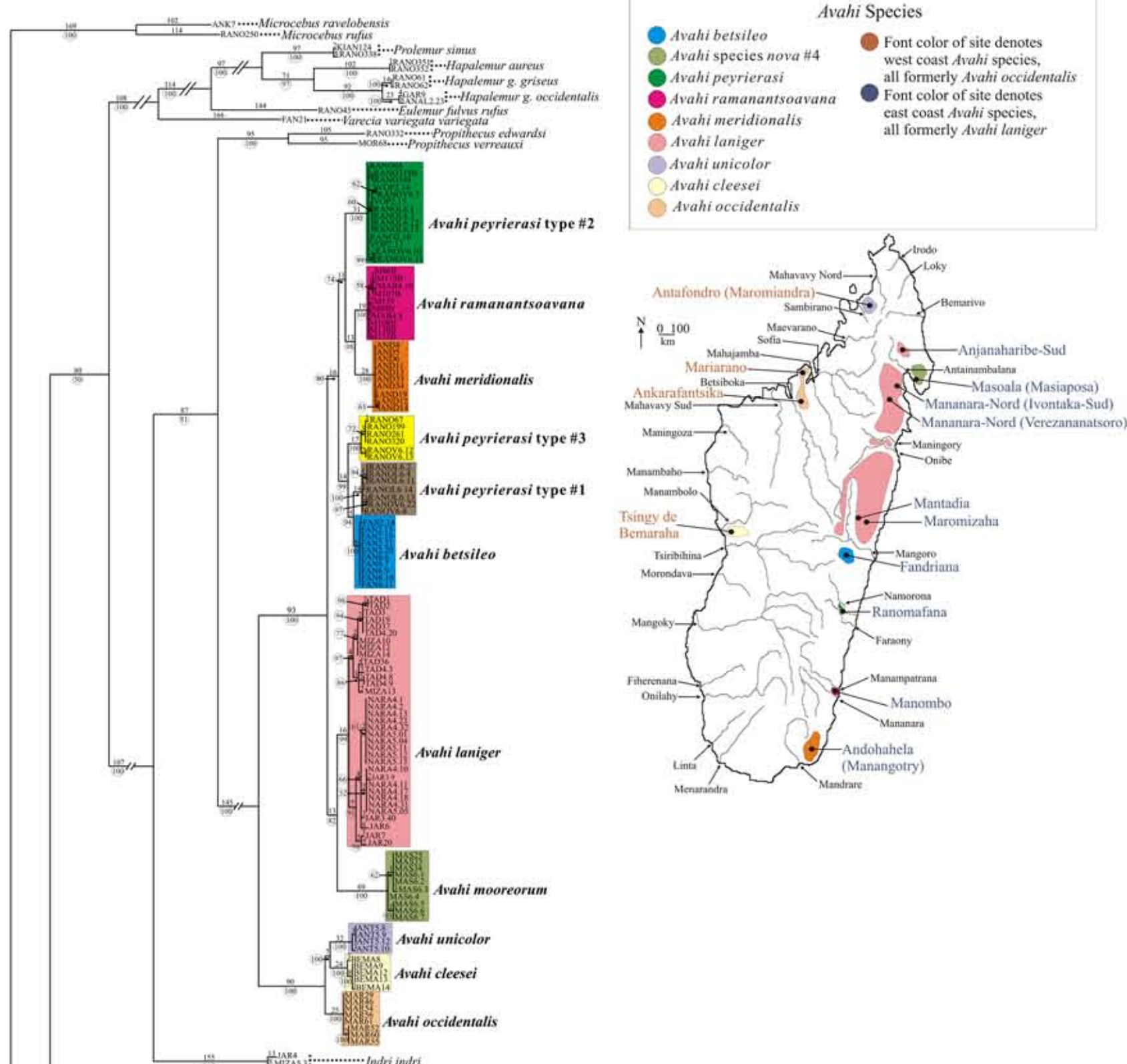
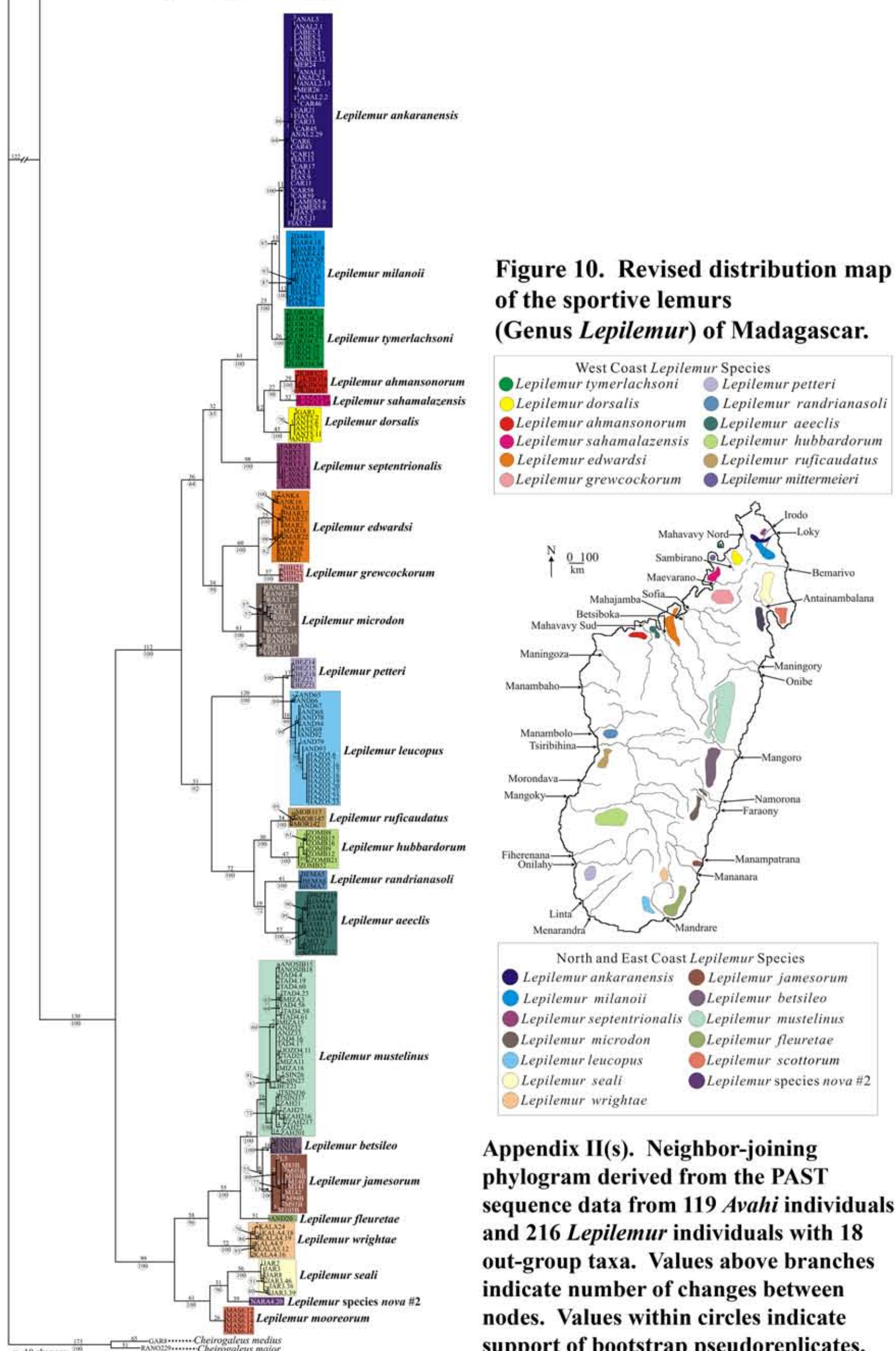


Figure 10. Revised distribution map of the sportive lemurs (Genus *Lepilemur*) of Madagascar.



Appendix II(s). Neighbor-joining phylogram derived from the PAST sequence data from 119 *Avahi* individuals and 216 *Lepilemur* individuals with 18 out-group taxa. Values above branches indicate number of changes between nodes. Values within circles indicate support of bootstrap pseudoreplicates.

Figure 11. Combined distribution map of the genera *Avahi* and *Lepilemur*. A minimum of one *Avahi* species and one *Lepilemur* species are located between river pairs that act as barriers or boundaries of the range. Rivers that segregate *Avahi* and *Lepilemur* species on the western half of Madagascar are displayed in red font, and the rivers that segregate *Avahi* and *Lepilemur* species on the eastern half of Madagascar are in blue font.

