

# The Pinchot Eagle



Friends of Pinchot State Park

July/August/September 2011

## New Park Manager: Bob Deffner



PHOTO COURTESY OF GIFFORD PINCHOT STATE PARK

Bob Deffner, Park Manager

On May 10, 2011, the Department of Conservation and Natural Resources named Bob Deffner as manager of Gifford Pinchot State Park, York County. He is the former manager of the R.B. Winter State Park Complex in Union County.

"Bob brings a solid administrative background to his latest state park assignment, and his enthusiasm and public relations skills will only improve the visitor experience at Gifford Pinchot," said Bureau of State Parks Director John Norbeck.

(Continued on page 4)

## Trailcare Day Was a Success!

by Steve Stroman

On May 7, 2011, the Friends of Pinchot State Park, in partnership with the Keystone Trails Association, conducted a trailcare workday from 9:00am to 5:00pm. There were 21 participants, contributing over 125 hours!

**Beaver Creek Trail**  
Approximately 150 feet of muddy trail was rebuilt using rocks from the area and limestone and trail mix provided by the park. The new trail includes drainage canals to protect the trail in the future.



PHOTO BY PAT SABOLD

## DID YOU KNOW...

...Gifford Pinchot State Park is participating in a first-time campers program?

There has never been a better time to try camping for the first time! Gifford Pinchot State Park and a few other award-winning Pennsylvania State Parks have teamed up with Gander Mountain to offer camping to first-time campers.



For just \$20, a weekend's worth of fresh air, family memories and fun are yours to be had.

Campers get two nights of camping, equipment rental and hands-on instruction on how to camp by state park expert campers. You won't be able to keep the gear, but you'll receive great discounts on everything you're trying out, plus more!

For more information, contact the park office at 717-432-5011.



PHOTO BY PAT SABOLD

**Beaver Creek Trail**  
Eighty-four (84) feet of boardwalk was constructed across two chronically muddy sections of trail. The boardwalk will allow vegetation to recover on wide, degraded and compacted sections of trail.

**Trail pruning and cleaning.** The following trails were trimmed with loppers, and had light winter debris and litter removed: Quaker Race Trail, Lakeside Trail on the south side of the lake between the Conley Road parking area and the yurts, Old Farm Trail, Fern Trail, Midland Trail, and Alpine Trail.

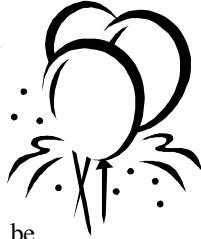
(Continued on page 2)

# Friends Hold Open House

Saturday, June 25, 2011

11:00am – 2:00pm

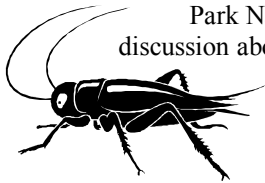
Nature/Interpretive Center  
Conewago Day Use Area



The Friends of Pinchot State Park will be hosting an open house at the Nature/Interpretive Center (Conewago Day Use Area). Everyone is invited to stop by, meet the board members, and learn about the projects we have been working on. Light refreshments will be available.

## Bug Hunt – 11:00am

(ages 3 and up)



Park Naturalist, Beth Kepley, will lead a discussion about what insects are and how they differ from us. Then, participants will go out and explore to see how many different kinds of insects can be found.  
*Nature/Interpretive Center.*

## Wildflower Walk – 1:00pm

(ages 10 and up)

Wildflower enthusiast, Pat Sabold, will lead a warm summer stroll identifying wildflowers and sharing a bit of lore about the plants. *Nature/Interpretive Center.*

## Trailcare Day

(Continued from page 1)



PHOTO BY PAT SABOLD

### Quaker Race Trail

The entire Quaker Race Trail was blazed in both directions (yellow blazes meaning “hiking only”).

(Continued on page 3)

# Souvenir T-Shirts

Available at the Open House on  
Saturday, June 25, 2011



Gifford Pinchot State Park w/Pine Tree Image  
Sand w/Forest Green



Friends of Pinchot State Park Logo  
Military Green

T-Shirts are 100% Cotton  
Sizes Available: Adult - S, M, L, XL, 2X, 3X  
Friends of Pinchot State Park Members, \$12.00\*  
Non-Members, \$15.00\*



4x6 Oval Removable Bumper Sticker  
\$2.00 each



# CALENDAR OF EVENTS

## JUNE

- Fri., June 17 ..... **Disc Golf, What Is It?, 6:00-7:00pm**  
*Ages 6 and up, Nature/Interpretive Center, Conewago Day Use Area*
- Sat., June 18 ..... **Kid's Bug Hunt, 3:00-4:00pm**  
*Ages 3 to 10; Nature/Interpretive Center, Conewago Day Use Area*
- Fri., June 24 ..... **Vernal Pool Discovery Walk, 8:00-9:00pm**  
*All ages; Meet at Campground Office*
- Sat., June 25 ..... **Open House, 11:00am-2:00pm**  
*Nature/Interpretive Center, Conewago Day Use Area*
- Sat., June 25 ..... **Kid's Bug Hunt, 11:00am-12:00pm**  
*Ages 3 and up, Nature/Interpretive Center, Conewago Day Use Area*
- Sat., June 25 ..... **Wildflower Walk, 1:00pm-2:30pm**  
*Ages 10 and up, Nature/Interpretive Center, Conewago Day Use Area*

## JULY

- Fri., July 1 ..... **Summer Stargaze and the Human Solar System, 8:00-10:30pm**  
*Campground, Open field near pet-friendly loop*
- Fri., July 8 ..... **Family Fishing Event, 6:00-9:00pm**  
*Pre-registration Required  
Nature/Interpretive Center, Conewago Day Use Area*
- Sat., July 9 ..... **Kid's Nature Art, 3:00-4:00pm**  
*Nature/Interpretive Center, Conewago Day Use Area*
- Sat., July 9 ..... **Christmas in July, 3:00-10:00pm**  
*Program for Registered Campers Only*
- Sat., July 16 ..... **Kid's Scavenger Hunt, 3:00-4:00pm**  
*Nature/Interpretive Center, Conewago Day Use Area*
- Sat., July 16 ..... **Pinchot Sailing Club Fun Sail, 9:00am-5:00pm**  
*Conewago Day Use Area, Rain Date: Saturday, July 23rd*
- Sat., July 22 ..... **Dreamwrights' Theatre Under the Trees "Much Ado About Nothing", 6:30-8:30pm**  
*Campground Amphitheater*

## AUGUST

- Sat., August 6 ..... **Family Fishing Event, 9:00am-12:00pm**  
*Pre-registration required  
Nature/Interpretive Center, Conewago Day Use Area*
- Sat., August 13 ..... **Rockin' Rocks!, 7:00-8:00pm**  
*Campground Amphitheater*

## SEPTEMBER

- Mon., September 5 ..... **Fish-For-Free Day, 12:00am-11:59pm**  
*Fish for free (no license required) throughout Pennsylvania*

## OCTOBER

- Sat., October 22 ..... **Pinchotween, 2:00pm**  
*Environmental Center, Conewago Day Use Area*

For more information and an updated list of events, please visit our website: [www.friendsofpinchot.org/home/calendar](http://www.friendsofpinchot.org/home/calendar)

## Trailcare Day

(Continued from page 2)



PHOTO BY PAT SABOLD

### Trees across the trail were removed from the following trails:

- A tree blocking the high water trail on the Lakeside Trail just south of Route 177
- A large tree across Quaker Race Trail at the top of the hill
- A large tree causing a muddy avoidance area on Beaver Creek Trail
- A tree on the Lakeside Trail just east of Boat Mooring #3 that blocked future access to a muddy section of trail.
- A tree on Lakeside Trail west of Boat Mooring #3 that was causing bikers to create a muddy avoidance area
- Two trees on Boulder Point Trail



PHOTO BY PAT SABOLD

**Beaver Creek Trail**  
A bridge moved by the recent flash flood was repositioned and reanchored on rocks.

Additional photos of the trailcare day can be viewed at the Friends of Pinchot State Park's website:  
[www.friendsofpinchot.org/gallery](http://www.friendsofpinchot.org/gallery)

**New Park Manager**  
(Continued from page 1)

"With the park an easy drive from Harrisburg and York, visitors value this retreat as a place to connect with nature and enjoy the healthy benefits of so many recreational activities," Deffner said. "Because hiking and

camping are very popular activities at Gifford Pinchot, I plan on improving the park's trail system and continuing to upgrade the campground to make it more user-friendly."

Deffner began his Bureau of State Parks career as a park ranger, working from 1980 to 1983 at Parker Dam State Park, Clearfield County. He managed a Millvale hardware store from 1983 to 1990 before returning to the bureau as an environmental education specialist at Jennings Environmental Education Center, Butler County, and then manager of Mt. Pisgah State Park, Bradford County. Since 1999, he managed the R.B. Winter State Park in Union County and three smaller satellite parks: Sand Bridge, Ravensburg, Clinton County; and McCalls Dam, Centre County.

A native of Pittsburgh, Deffner, 53, received an associate's degree in wildlife management from Pennsylvania State University and a bachelor's degree in wildlife management from Slippery Rock University of Pennsylvania.

**NEW WOODSHED**



The Friends recently purchased a 24'x24' woodshed to be used for bundling and storing of firewood sold in the campground. Previously, the Friends shared a much smaller shed with the park, which created space issues for both parties. The new shed is located near the campground office.

Firewood sales generate a large portion of the Friends' annual income. Proceeds will be used to fund programs and projects throughout the park.



2200 Rosstown Road  
Lewisberry, PA 17339  
(717) 432-5011  
Email: FOPSP@aol.com

**ADVISORY BOARD**

**Chairman**  
Jim Merlino

**Co-Chairman**  
Ted Prindle

**Treasurer**  
Sally Ray

**Secretary**  
Betsy Leppo

**Board Members**  
Larry Reddy  
Kevin Merlino  
Pat Sabold  
James Grove  
Steve Stroman

**Park Representative**  
Beth Kepley

*This volunteer advisory board is dedicated to preserving, protecting and enhancing the natural and recreational resources of Gifford Pinchot State Park for present and future generations.*

Friends of Pinchot State Park is a chapter of the Pennsylvania Parks and Forests Foundation (PPFF). The PPFF is a 501(c)(3) non-profit organization. Contributions are tax deductible to the fullest extent of the law.

**Newsletter Editor: Pat Sabold**  
psaboldFOPSP@aol.com

Publication deadlines are the 5th of each quarter (March, June, September, December). The Advisory Board reserve publication decisions.

**FRIENDS OF PINCHOT STATE PARK**

2011-2012 Annual Membership Application

**Make checks payable to: PPFF**  
(include FOPSP on the memo line)

Mail form with payment to: Friends of Pinchot State Park, 2200 Rosstown Road, Lewisberry, PA 17339

NEW MEMBERSHIP     RENEWAL

<input type="checkbox"/> Senior (age 65+)	\$10.00	<input type="checkbox"/> Corporate	\$250.00+
<input type="checkbox"/> Individual	\$15.00	<input type="checkbox"/> I'd like to make a	
<input type="checkbox"/> Family	\$25.00	tax-deductible	
<input type="checkbox"/> Damselfly Sponsor	\$50.00	contribution of \$	_____
<input type="checkbox"/> Dragonfly Sponsor	\$100.00	<b>TOTAL \$</b>	_____

Name(s) \_\_\_\_\_

Street \_\_\_\_\_

City \_\_\_\_\_

State/Zip Code \_\_\_\_\_

Phone \_\_\_\_\_

Email \_\_\_\_\_

I would like to receive my newsletter via email.  
 I am interested in volunteering.

Friends of Pinchot State Park was formed in March 2009 as a chapter of the Pennsylvania Parks and Forests Foundation (PPFF). The PPFF is a 501(c)(3) non-profit organization. Contributions to PPFF are tax deductible to the fullest extent of the law. The official registration of the Pennsylvania Parks and Forests Foundation may be obtained from the Pennsylvania Department of State by calling toll free within Pennsylvania 1-800-732-0999. Registration does not imply endorsement.

Memberships are for one year, June 1 through May 31.

