

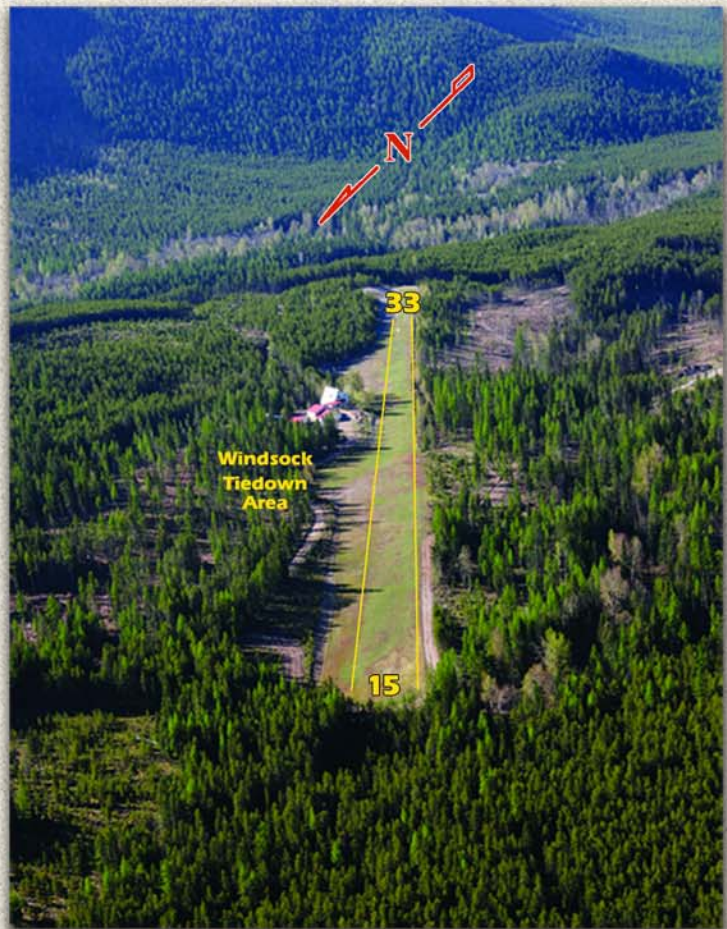


Welcome to Ryan Field

N48° 29.014'
 W113° 57.644'
 CTAF: 122.9

Airport Remarks:

- Airstrip is surrounded by tall trees
- Land and take off south whenever feasible
- Squirrely winds possible
- Windsock indications may not be reliable
- Check density altitude
- Airstrip not suitable for all aircraft
- Mountain flying experience required
- Gopher holes along west side of runway
- No camping, no ground transportation
- No winter maintenance
- Extensive sightseeing helicopter activity in the area during the summer



RWY: 15/33
Length: 2620' x 65'
Elevation: 3630'

